

Monta

in the
ODD GALAXY

DURATION: 40 x 7,5' or 10 x 30'
GENRE: Slapstick Action Comedy
YEAR: 2019
LANGUAGES: English
AUDIENCE: 6+
COUNTRY OF ORIGIN: Vietnam
FORMAT: HD
AVAILABLE RIGHTS: Worldwide, excluding Vietnam
PRODUCER: Vintata Animation Studio

The story began in the heavenly Cosmic Kitchen where Monta was assistant to the Supreme Chef, helping him whip up planets and stars in his awesome celestial oven. But when Monta tried to make his own planet before he was ready, he added too much fish sauce and caused the oven to explode with a "Big Bang" that flung hundreds of odd planets across the galaxy. Monta then has to gather his friends - Maika, Wood, Sharkira, Banana and Wally - to travel to odd places and fix the oddest problems.

THE 10 VISITED PLANETS



1. Planet Noodle

Where the ramen people are at war with the pho folks.



6. Planet Fish Bowl

Where the fish don't know how to swim and wear innertubes to keep them afloat.



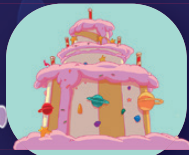
2. Planet Garbage

A heavily polluted planet, where the Garbage King - a rat who truly loves eating garbage - reigns supreme.



7. Planet Christmas

Might be the best place in the Odd Galaxy, if only Odd Santa can be a bit less odd. Surely nobody enjoys a Christmas where they must put gifts under the Christmas tree to be taken away...



3. Planet Birthday Cake

The citizens here are all cakes, even the houses too! But certainly not the sweet kind...



8. Planet Flowers

Heaven for flowers lovers, where anything can grow! That is, even your hair, as Doctor Frankenflower here loves an experiment or two...



4. Planet Cell Phone

A planet shaped like a cell phone and populated by the Selfians, a race of people who have no bodies, just faces on phone screens.



9. Planet Dinosaurs

This planet is home to dinosaurs of all kinds. And in case you might be wondering, their hobbies include mud bathing, soccer, visiting museums and parks!



5. Planet Teeth

Home of the baby teeth, who love nothing more than sweet candies. If you can't imagine what the life of a tooth must feel like, why not pay a visit?



10. Planet Flat Tire

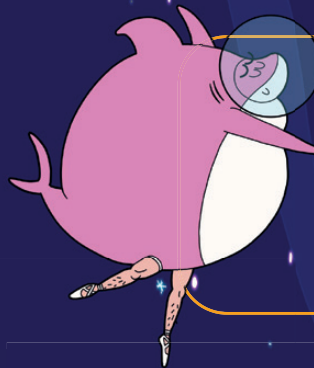
The ruler of this planet is someone who loves collecting old tires.

ODD CHARACTERS



Monta

The thoughtful, proactive leader who holds this team of oddballs together. He is a langur, yet not a normal monkey. He's resourceful, curious, clever, inventive, and does everything fast, with a charming naiveté. He also really loves to eat.



Sharkira

Sharkira is the complete opposite of a shark in all ways: He lives out of water; he's a vegetarian; he's terrified of mostly everything; and he's sweet-natured and soft-spoken, with an unconditionally loving heart to the point of being ridiculous.



Maika

Maika is a sharp-tongued, says-it-like-she-sees-it female sheep. Maika's weakness is her vanity. But beneath that, she cares deeply about her shipmates and worries about them constantly. Her special weapon is a lipstick saber, which can be used to touch up her lips, wield at the adversaries or as a selfie stick to get the best shots of herself.



Wally

Wally is the opposite of Sharkira, in that whereas Sharkira is timid and fearful, little Wally is fearless. He swims in and out of Sharkira's mouth and Sharkira is more worried about swallowing him than Wally is of getting swallowed. Wally will contrast and highlight Sharkira's un-shark-like behavior.



Wood

An off-the-wall, crazy psychic mallard who thinks he's a woodpecker. Wood is a real rattle brain. His diamond-hard beak can peck through anything. He's brave to the point of recklessness, and his special ability comes from the "third eye" in the middle of his head through which he "sees all".



Banana

Banana flies Monta and friends all over the galaxy at the speed of light (or slower depending on the speed limit). She can also change into a submarine or a sailing ship or a rock boring machine or a school bus when needed. Banana can also change her size at will. She can be small enough to perch on Monta's shoulder like a parrot, or large enough to battle a humongous alien spaceship.

